



# ISHLT

A Society that Includes Basic Science, the Failing Heart, & Advanced Lung Disease

## ISHLT Elects New Board Members and Professional Community Leaders

*Incoming volunteer leadership brings diverse expertise and dedication to patient care*

**CHICAGO, USA – 1 December, 2023** – The International Society for Heart and Lung Transplantation (ISHLT) has announced the results of the election for the 2024 Board of Directors as well as leadership positions in the Professional Communities. The Society will welcome four new members to the Board of Directors and 16 leaders across ISHLT's professional specialty communities to serve as representatives to the 4 ISHLT Interdisciplinary Network Steering Committees and the Early Career & Trainee Committee. Terms begin 1 May, 2024, immediately following the **ISHLT 44<sup>th</sup> Annual Meeting & Scientific Sessions**.

**Professor Josef Stehlik, MD**, will serve as ISHLT President-Elect beginning in May 2024 and as ISHLT President beginning in May 2025. **President-Elect Professor Christian Benden, MD, MBA, FCCP**, begins his term as ISHLT President in May 2024.

---

The elected members of the Board of Directors are:



**Josef Stehlik, MD | President-Elect**

Professor of Medicine, Heart Transplant Program  
Director Medicine University of Utah  
Salt Lake City, UT USA

Professor Stehlik's areas of interest include advanced heart failure, heart transplantation, mechanical circulatory support, cardiac sarcoidosis, and cardioversion. He has served as a member of the *JHLT* Editorial Board, Medical Director of the Thoracic Registry, a member of the Research Oversight Committee, a Regional Ambassador of the ISHLT Foundation, and a member of the Annual Meeting Planning Committee. He will transition from his current role as a member of the Board of Directors to the role of President-Elect.



# ISHLT

A Society that Includes Basic Science, the Failing Heart, & Advanced Lung Disease



**Mardi Gomberg-Maitland, MD, MSc | Treasurer**

Professor of Medicine, Walter G. Ross Chair in Clinical Research  
George Washington University  
Washington, DC USA

Professor Gomberg-Maitland's areas of interest include pulmonary hypertension, pulmonary heart disease, and complex heart failure. She has served as a member of the Standards and Guidelines Committee and the Annual Meeting Program Planning Committee. She will transition from her current role as a member of the Board of Directors to begin a two-year term as Treasurer.



**Saima Aslam, MD, MS | Director**

Professor of Medicine, Solid Organ Transplant Infectious Diseases  
University of California  
San Diego, CA USA

Professor Aslam's research interests include transplant, infectious diseases, catheter-related bacteremia, and biofilm-based infection. She currently serves as a member of the *JHLT* Editorial Board and was the Chair of the ISHLT COVID-19 Task Force.



**David A. Baran, MD | Director**

Section Head, Heart Failure, Transplant and MCS  
Cleveland Clinic Florida  
Parkland, FL USA

Dr. Baran's research interests include advanced heart failure, heart transplantation, and mechanical circulatory support. He has served in a variety of roles at ISHLT, including as a member of the Annual Meeting Program Planning Committee, member of the ISHLT Donor Heart Selection Task Force, and as Co-Chair of the ISHLT Special Task Force on Cardiogenic Shock.



**Marta Farrero Torres, MD, PhD | Director**

Head of Heart Failure Unit  
Hospital Clínic Barcelona  
Barcelona, Spain

Dr. Farrero Torres's areas of interest include advanced heart failure, heart transplantation, and assist devices. She currently is a member of the *JHLT* Editorial Board. She has served as the Chair of the Advanced Heart Failure and



# ISHLT

A Society that Includes Basic Science, the Failing Heart, & Advanced Lung Disease

Transplantation Interdisciplinary Network Steering Committee, a member of the Leadership Advisory Forum, and as the Co-Leader of ISHLT en Español.



**Haifa Lyster, MSc, FRPharmS, FFRPS | Director**

Consultant Pharmacist Transplantation and MCS, Harefield Research Lead  
Royal Brompton and Harefield Hospitals  
London, United Kingdom

Dr. Lyster's research interests include infections, antifungal drug TDM, hepatic drug handling, and renal sparing regimens post-transplantation. She currently serves as member and past chair of the Advanced Heart Failure and Transplantation Interdisciplinary Network Steering Committee and as a section lead for the ISHLT Guidelines for the Care of Cardiac Transplant Candidates. She has served as a member of the Annual Program Planning Committee and as a writer for various ISHLT guidelines and publications.



**Martin Schweiger, MBA, FABS, FEBS | Director**

Director MCS Program  
Children's Hospital Zürich  
Zürich, Switzerland

Professor Schweiger's research interests include congenital cardiac surgery, heart transplantation, tissue engineering, and assist devices. He has served a variety of roles at ISHLT, including Co-Chair of the Early Career and Trainee Committee, the Pediatrics Professional Community representative to the Mechanical Circulatory Support Interdisciplinary Network Steering Committee, a member of the ISHLT Membership Task Force, and Vice Chair of the Junior Faculty and Trainee Council.

Beginning 1 May, 2024, the new composition of the Board will be:

**President:** Christian Benden, MD, MBA, FCCP, Pediatric Pulmonologist, Switzerland (2026)

**Past President:** Jason D. Christie, MD, MS, Pulmonologist, USA (2025)

**President-Elect:** Josef Stehlik, MD, Cardiologist, USA (2027)

**Treasurer:** Mardi Gomberg-Maitland, MD, MSc, Cardiologist, USA (2026)

**Secretary:** Peter M. Hopkins, FRACP, Pulmonologist, Australia (2025)



# ISHLT

A Society that Includes Basic Science, the Failing Heart, & Advanced Lung Disease

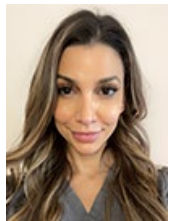
- Director:* Saima Aslam, MD, MS, Infectious Diseases, USA (2027)  
*Director:* David A. Baran, MD, Cardiologist, USA (2027)  
*Director:* Caron L. Burch, RN, MSN, FNP, CCTC, Transplant Coordinator, USA (2025)  
*Director:* Marta Farrero Torres, MD, PhD, Cardiologist, Spain (2027)  
*Director:* Haifa Lyster, MSc, FRPharmS, FFRPS, Pharmacist, United Kingdom (2027)  
*Director:* Jignesh K. Patel, MD, PhD, Cardiologist, USA (2025)  
*Director:* Yael Peled, MD, Cardiologist, Israel (2026)  
*Director:* Diyar Saeed, MD, PhD, Cardiac Surgeon, Germany (2025)  
*Director:* Martin Schweiger, MBA, FABS, FEBS, Cardiac Surgeon, Switzerland (2026)  
*Director:* Laurie D. Snyder, MD, Pulmonologist, USA (2026)  
*Director:* Simon Urschel, MD, Immunologist, Pediatric Cardiologist, Canada (2026)

The elected Professional Community leaders are:



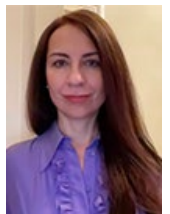
**Ashley Fritz, DO**  
Mayo Clinic  
Jacksonville, FL USA

***Anesthesiology & Critical Care Representative***  
***Advanced Heart Failure and Transplantation Interdisciplinary Network***  
***Steering Committee***



**Alin Gragossian, DO, MPH**  
Donor Network  
West Glendale, CA USA

***Anesthesiology & Critical Care Representative***  
***Early Career & Trainee Committee***



**Clara Hjalmarsson, MD, PhD**  
Sahlgrenska University Hospital  
Gothenburg, Sweden

***Cardiology Representative***  
***Pulmonary Vascular Disease (PAH & CTEPH) Interdisciplinary Network***  
***Steering Committee***



# ISHLT

A Society that Includes Basic Science, the Failing Heart, & Advanced Lung Disease



**Anju Bhardwaj, MD**

University of Texas/McGovern Medical School  
Houston, TX USA

***Cardiology Representative  
Early Career & Trainee Committee***



**Cameron R. Wolfe, MD**

Duke University Medical Center  
Durham, NC USA

***Infectious Disease Representative  
Advanced Heart Failure and Transplantation Interdisciplinary Network  
Steering Committee***



**Kathryn Hughes, MSN, AGACNP-BC**

Vanderbilt University Medical Center  
Nashville, TN

***Nursing & Allied Health Representative***

***Advanced Lung Failure Transplantation Interdisciplinary Network Steering Committee***



**Thomas Schlöglhofer, MSc**

Medical University of Vienna  
Vienna, Austria

***Nursing & Allied Health Representative  
Mechanical Circulatory Support (MCS) Interdisciplinary Network***

***Steering Committee***



**Vanathi Sivasubramaniam, MBBS, FRCPA**

St. Vincent's Hospital  
Sydney, Australia

***Pathology Representative  
Advanced Heart Failure and Transplantation Interdisciplinary Network***

***Steering Committee***



# ISHLT

A Society that Includes Basic Science, the Failing Heart, & Advanced Lung Disease



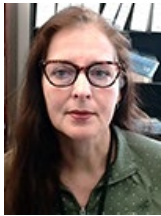
**Francesca Lunardi, MD, ScD, PhD**

University of Padova  
Padova, Italy

***Pathology Representative***

***Advanced Lung Failure Transplantation Interdisciplinary Network***

***Steering Committee***



**Katharina Wassilew, MD, PhD, Dsmed, MHBA, MIAC**

Royal Papworth Hospital  
England, United Kingdom

***Pathology Representative***

***Mechanical Circulatory Support (MCS) Interdisciplinary Network***

***Steering Committee***



**Christina Kaufman, PhD**

University of Louisville School of Medicine  
Louisville, KY USA

***Pathology Representative***

***Pulmonary Vascular Disease (PAH & CTEPH) Interdisciplinary Network Steering Committee***



**Brigitte Willemse, MD, PhD**

Beatrix Children's Hospital/University Medical Center  
Groningen, Netherlands

***Pediatrics Representative***

***Advanced Lung Failure Transplantation Interdisciplinary Network Steering Committee***



**Fawwaz Shaw, MD**

Emory University/Children's Healthcare of Atlanta  
Atlanta, GA USA

***Pediatrics Representative***

***Mechanical Circulatory Support Interdisciplinary Network Steering Committee***





# ISHLT

A Society that Includes Basic Science, the Failing Heart, & Advanced Lung Disease



**Tara Veasey, PharmD, BCTXP**

Allegheny General Hospital  
Pittsburgh, PA USA

**Pharmacy Representative**

**Advanced Heart Failure Transplantation Interdisciplinary Network**

**Steering Committee**



**Bailey Colvin, PharmD, BCCP**

J. W. Ruby Memorial Hospital  
Morgantown, WV USA

**Pharmacy Representative**

**Early Career & Trainee Committee**



**Lorenzo Zaffiri, MD, PhD**

Cedars-Sinai Medical Center  
Los Angeles, CA USA

**Pulmonology Representative**

**Early Career & Trainee Committee**

###

#### Media Contact:

Jess Burke, CAE, IOM

ISHLT Director of Marketing + Communications

[jess.burke@ishlt.org](mailto:jess.burke@ishlt.org)

+1-312-224-0015

#### About ISHLT

*The International Society for Heart and Lung Transplantation is a not-for-profit, multidisciplinary professional organization dedicated to improving the care of patients with advanced heart or lung disease through transplantation, mechanical support, and innovative therapies. With members in more than 60 countries, ISHLT is the world's largest organization dedicated to the research, education and advocacy of end-stage heart and lung disease. ISHLT members represent more than 15 different professional disciplines. For more information, visit [www.ishlt.org](http://www.ishlt.org).*